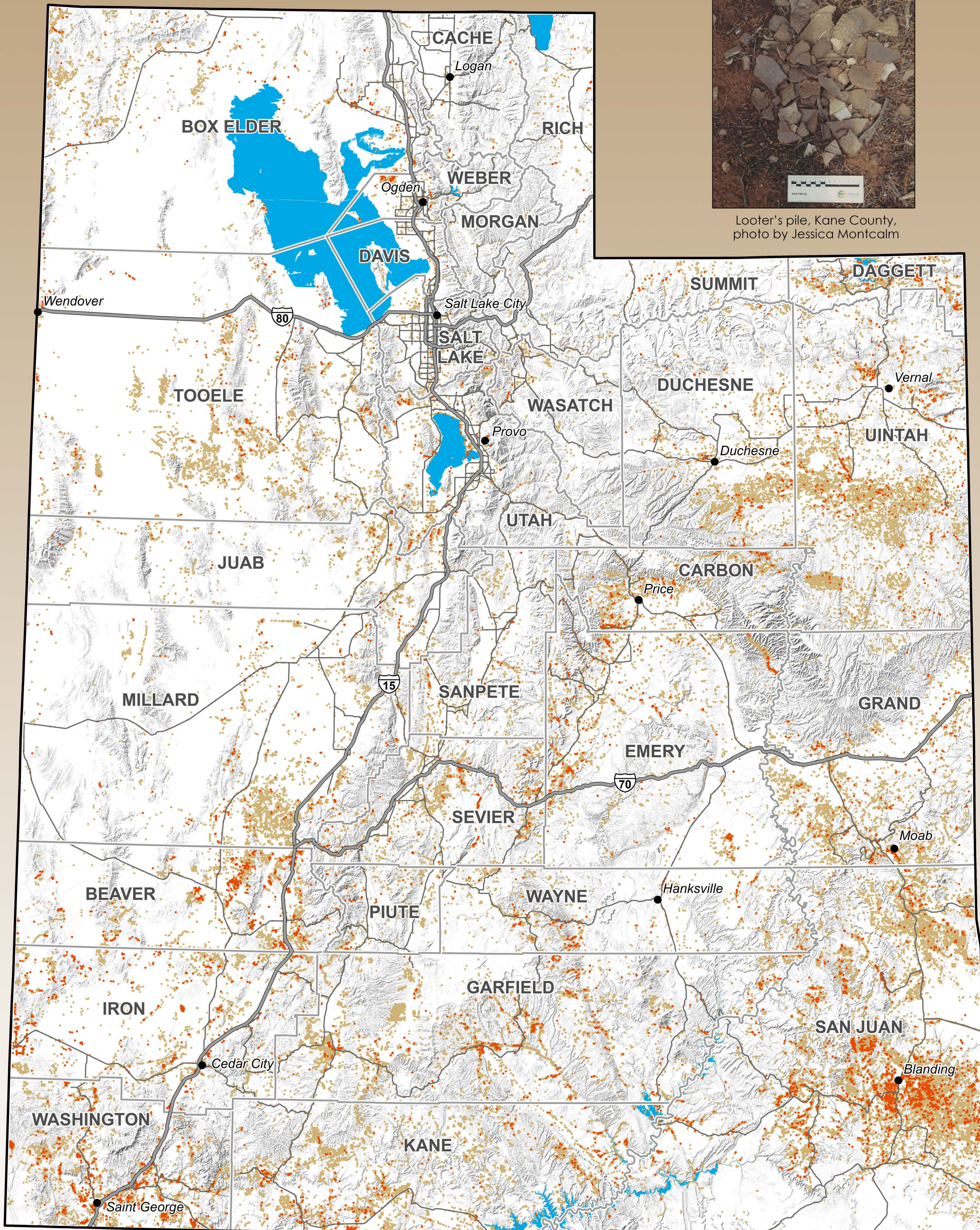


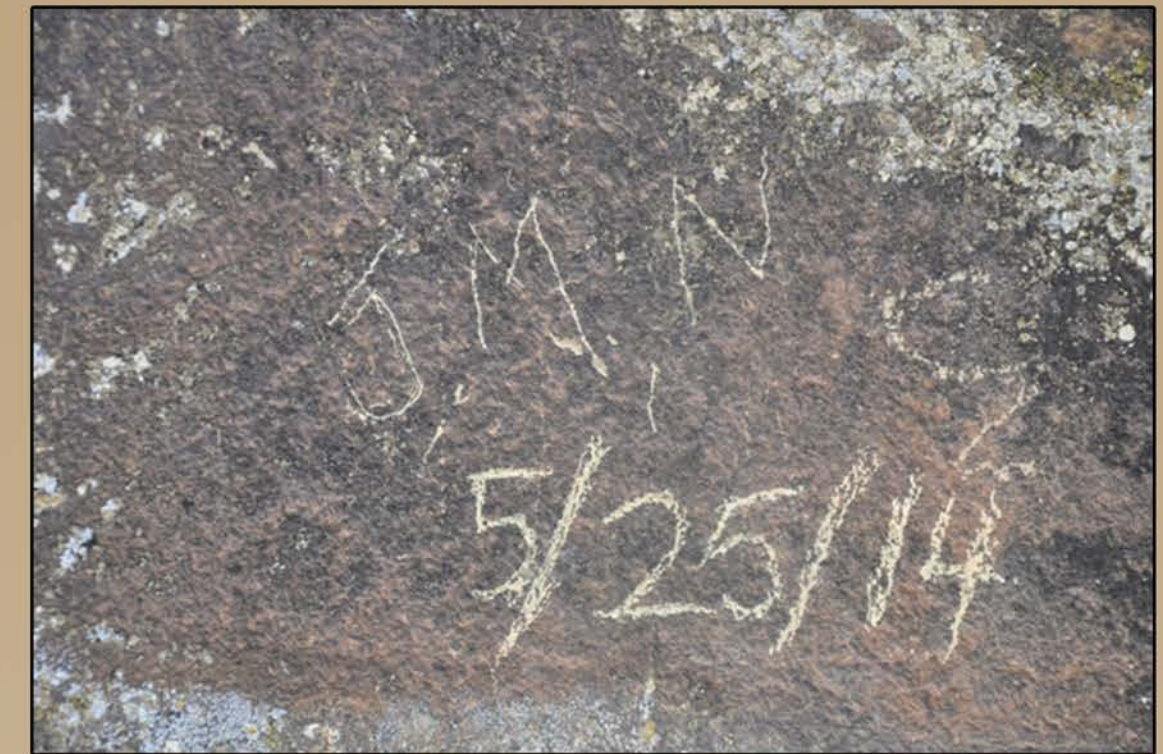
Vandalism: Don't Do It

Spatially tracking archaeological vandalism through time

Each year vandalism destroys and diminishes our shared cultural heritage. Vandalism includes graffiti, looting, or altering the cultural landscape. Damaging these items and places harms today's cultural descendants, eliminates scientific data potential, and extinguishes the experience for future generations.



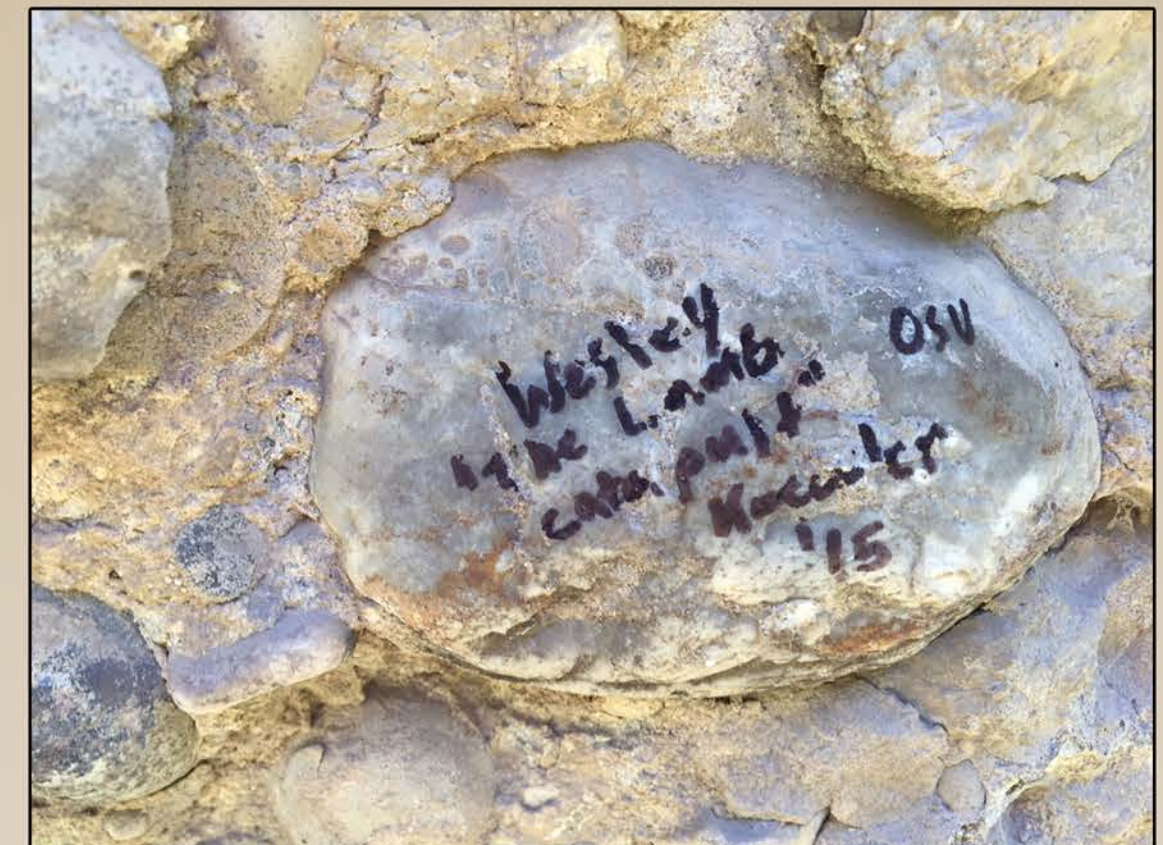
Looter's pile, Kane County, photo by Jessica Montcalm



Pregnant Buffalo Site, Carbon County, photo by Jerry Spangler via KSL



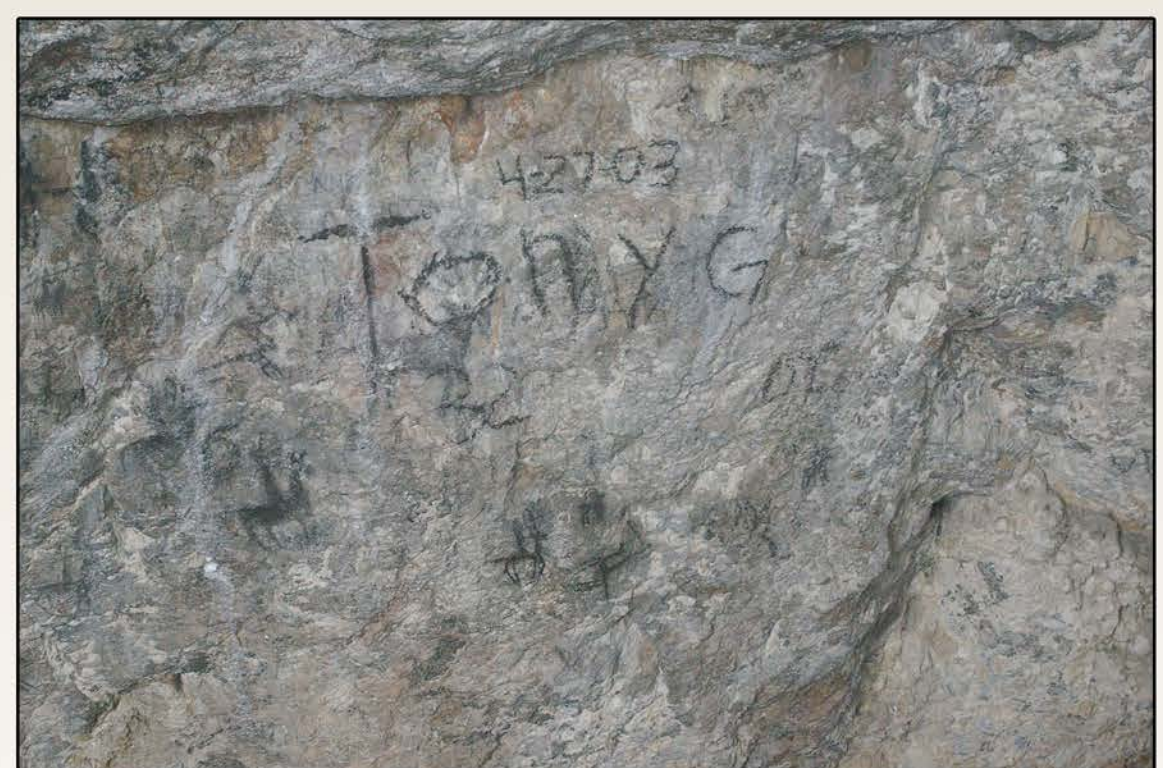
Lake Mountain graffiti, Utah County, photo by Amy Joi O'Donoghue via KSL



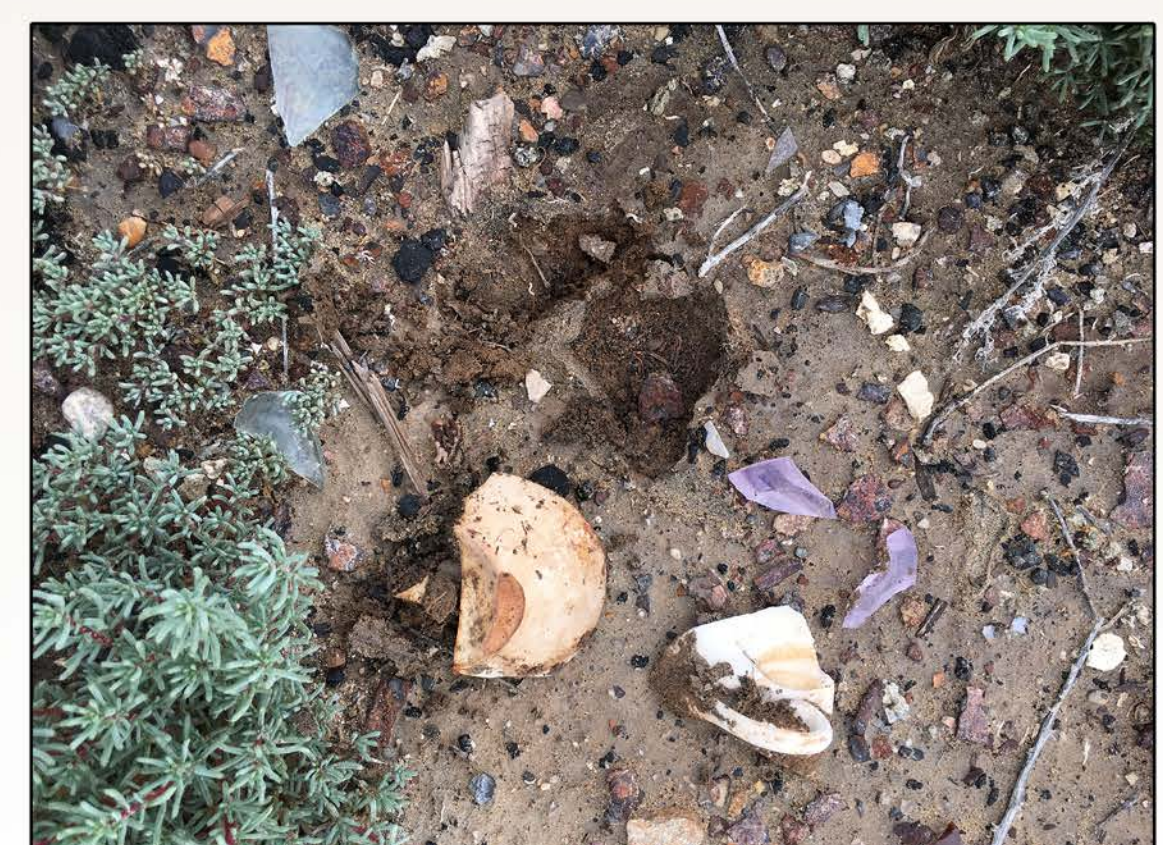
Chicken Creek Canyon, Juab County, photo by Rex Daley via KSL



Vandalism in San Juan County, photo by Josh Ewing via Salt Lake Tribune



Jukebox Cave, Tooele County, photo by Ron Road



Looter's pile in Terrace, Box Elder County, photo by Debbie Dahl



- Recorded Vandalism
- Recorded Archaeological Site

Facts about this map!

*Only about 10% of Utah has been surveyed - so we can infer that about 10% of archaeological sites have been recorded.
 *Not all locations are created equal - some areas have more sites than others.